

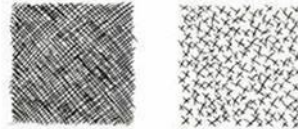
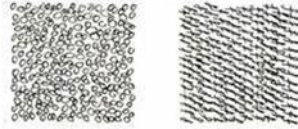
Year 9 Knowledge Organiser

Food Project

Georgina Luck

Georgina Luck is a UK based illustrator and freelance artist. Luck creates illustrations for advertising and some of her work is also used for food packaging. Her work uses vibrant key colours such as striking yellows and reds. Luck's work has an abstract feel and focuses on colours and shapes being quite loose and less controlled. Luck then uses a fine liner pen to add areas of detail to her work, for example packaging lettering

Mark Making



Watercolour Blending



What materials does the artist use in their work?
How has the artist used colour in their work?
Is the artist's work abstract?
Where is the evidence of this?
What is your opinion of the artist's work?
Remember to use technical language in your analysis!

*Accuracy,
observational, tone,
blending, shadow,
light, shade*



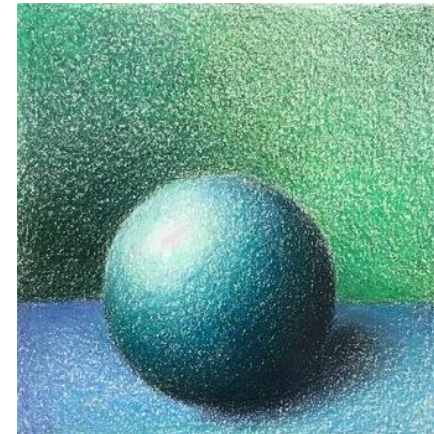
Recording from observation

Primary source-drawing
something real in front of you
Secondary source-drawing
from a picture

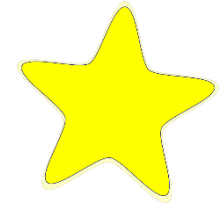
LINE	the path left by a moving point, e.g. a pencil or a brush dipped in paint. It can take many forms. e.g. horizontal, diagonal or curved.
tone	means the lightness or darkness of something. This could be a <u>shade</u> or how <u>dark</u> or <u>light</u> a <u>colour</u> appears
TEXTURE	the surface quality of something, the way something feels or looks like it feels. There are two types : <u>Actual</u> and <u>Visual</u>
SHAPE	an area enclosed by a <u>line</u> . It could be just an outline or it could be <u>shaded</u> in.
PATTERN	a design that is created by repeating <u>lines</u> , <u>shapes</u> , <u>tones</u> or <u>colours</u> . can be <u>manmade</u> , like a <u>design</u> on fabric, or <u>natural</u> , such as the markings on animal fur.
COLOUR	There are 2 types including Primary and Secondary . By mixing any two <u>Primary</u> together we get a <u>Secondary</u>

*Coloured pencil blending
using dark and light
shades*

Warm colours-yellow,
red, orange, brown
Cold colours- blue,
green, purple



How to make a pinch pot



1. Split the clay in half and roll into the shape of a ball. Make a hole in the centre and use your thumb to make 2 small cup shapes

2. Score the wall edges and mix a small amount of clay with water to make "slip". Use a brush to apply the slip on the wall edges



3. Join the two cup shapes together. Make sure they align correctly

4. Smoothen the edges to hide the join between the two clay cups. Use a kidney to smoothen the join

