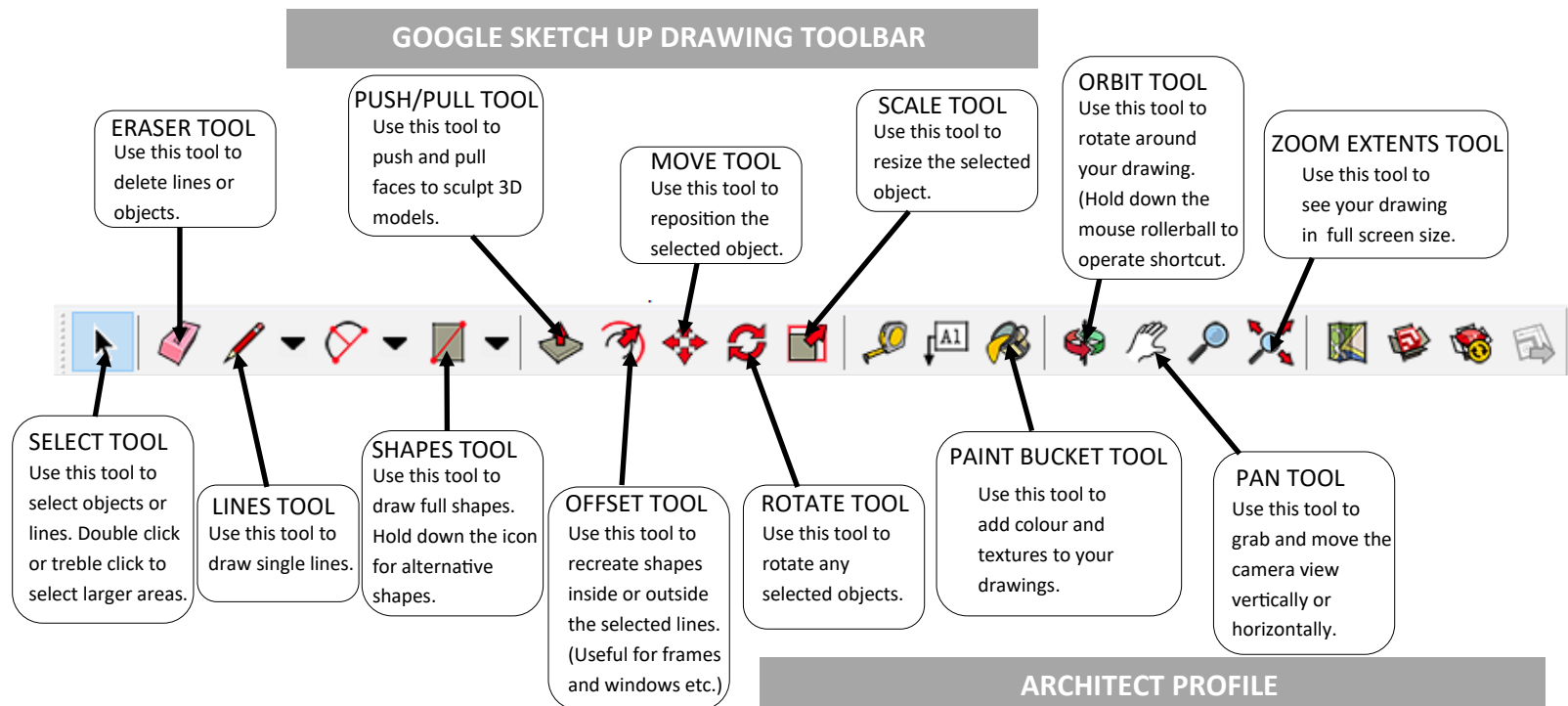


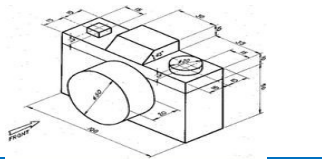
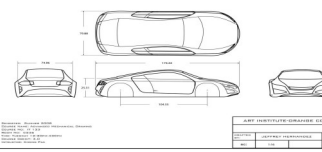


Modernism	Arts and Crafts
	Art Nouveau
	Expressionism
	De Stijl
	DaDa
	Futurism
	Russian Constructivism
	Bauhaus
	Art Deco
	Late Modern
	Swiss International
	Digital



KEYWORDS AND TERMS	-	DRAWING TYPES
One Point Perspective		A drawing that has one-point perspective when it contains only one vanishing point on the horizon line . This type of perspective is typically used for images of roads, railway tracks, or buildings viewed so that the front is directly facing the viewer.
Two Point Perspective		Two-point perspective drawing is a type of linear perspective . Linear perspective is a method using lines to create the illusion of space on a 2D surface. Two-point perspective uses two vanishing points placed on the horizon line .
Isometric Drawing		Isometric drawings are 3D drawings. They show three sides , all in dimensional proportion. All the vertical lines are drawn vertically but all horizontal lines are drawn at 30 degrees to the base line. Isometric is an easy way of drawing 3D images.
Orthographic Projection (3rd Angle)		Third angle projection is a method or orthographic projection which is a technique in portraying 3D design using a series of 2D views. Each side of the 3D object is projected alongside each other, as if it has been turned on it's side.

ARCHITECT PROFILE

Name: Zaha Hadid

Born in 1950 in **Iraq**

Studied **Architecture** in **London**

Design Philosophy: Her public buildings are often described as dynamic, as if they're a freeze-frame of an action shot. Zaha Hadid's style embraces striking lines, sometimes bold with expressive curves.

Her first commissioned work was the Vitra Fire Station in 1994, followed shortly by the geometric shape of the Contemporary Arts Centre in Cincinnati and the alien-esque concrete structure of the Phaeno Science Centre in Wolfsburg, Germany.

Quotes: "Women are always told, 'You're not going to make it, it's too difficult, you can't do that, don't enter this competition, you'll never win it,' - they need confidence in themselves and people around them to help them to get on."

"You have to be very focused and work very hard, but it is not about working hard without knowing what your aim is!"

